

TEAR DROP STACKABLE CHANNELIZER

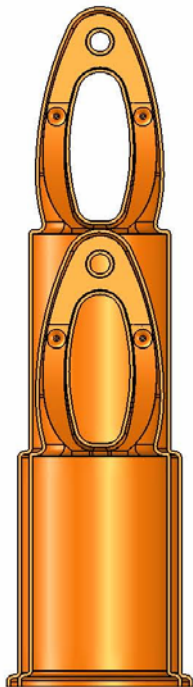
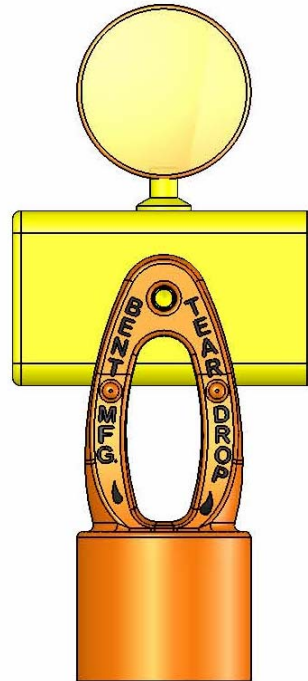


Bent Manufacturing Company

TEAR DROP STACKABLE CHANNELIZER

FEATURES:

- Multi-function device (three uses in one), 'sleeved cone,' 'tubular delineator post' and 'channelizer device.'
- Tear dropped handle allows for easy movement of several channelizers at a time.
- Recessed areas protect sheeting from being scratched or peeling off.
- Tear dropped handle accepts warning lights and can be used as a "roping off" device.
- Stackable with base.
- Will accommodate up to 5 bands of 6" sheeting.



SPECIFICATIONS:

| | |
|-----------------------------|---|
| Channelizer Material | Low or High Density Polyethylene |
| Channelizer Color | Fluorescent orange, drum orange, or white |
| Channelizer Height | 42" plus 6.5" handle |
| Base Material | Manufactured with minimum 45% recycled rubber |
| Base Size | Octagon: 16.5"x1.75"/Rectangular: 18"x28"x2" |
| Base Weight | 11, 15, and 30 pounds |
| Cone Dimensions | Top tier starts at 4" widening to 8" |
| Reflectivity | Engineer grade, Hi-Intensity, Hi-Intensity Prismatic, and Diamond Grade |